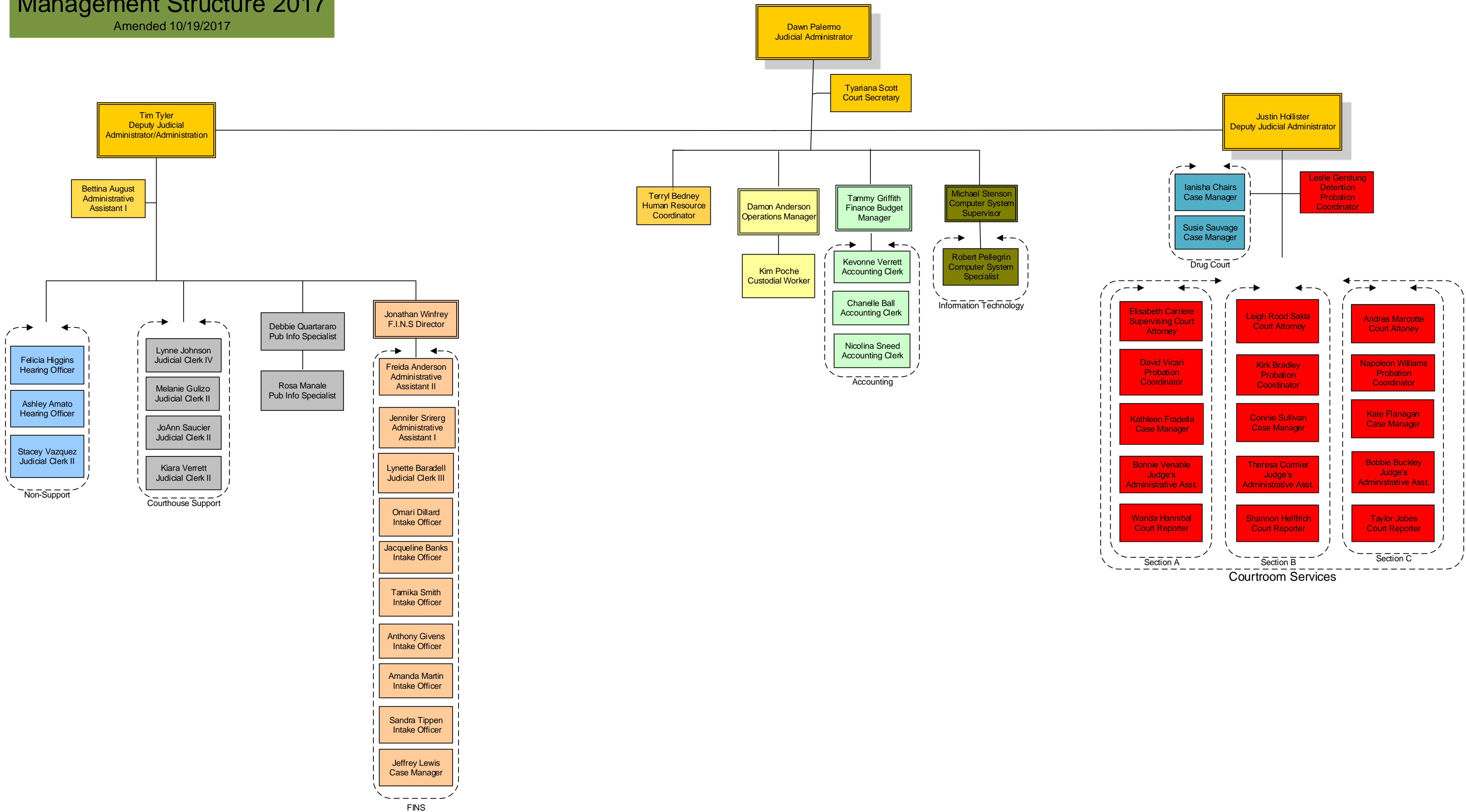


# Jefferson Parish Juvenile Court Management Structure 2017

Amended 10/19/2017

Judge Ann Murry Keller  
Judge Andrea Price Janzen  
Judge Barron Burmaster



## Divisions Legend

- |  |  |   |
|--|--|---|
| <span style="display: inline-block; width: 15px; height: 15px; background-color: yellow; border: 1px solid black;"></span> Administration  | <span style="display: inline-block; width: 15px; height: 15px; background-color: lightgrey; border: 1px solid black;"></span> Support Staff      | <span style="display: inline-block; width: 15px; height: 15px; background-color: lightgreen; border: 1px solid black;"></span> Accounting |
| <span style="display: inline-block; width: 15px; height: 15px; background-color: red; border: 1px solid black;"></span> Courtroom Services | <span style="display: inline-block; width: 15px; height: 15px; background-color: lightblue; border: 1px solid black;"></span> Drug Court         | <span style="display: inline-block; width: 15px; height: 15px; background-color: peachpuff; border: 1px solid black;"></span> FINS        |
| <span style="display: inline-block; width: 15px; height: 15px; background-color: lightblue; border: 1px solid black;"></span> Non-Support  | <span style="display: inline-block; width: 15px; height: 15px; background-color: yellow; border: 1px solid black;"></span> Facilities Management | <span style="display: inline-block; width: 15px; height: 15px; background-color: olive; border: 1px solid black;"></span> IT              |